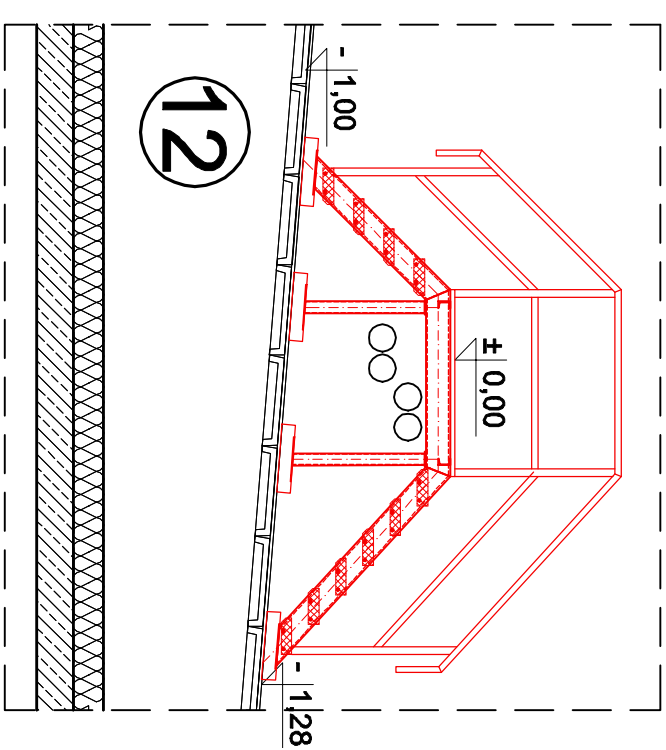
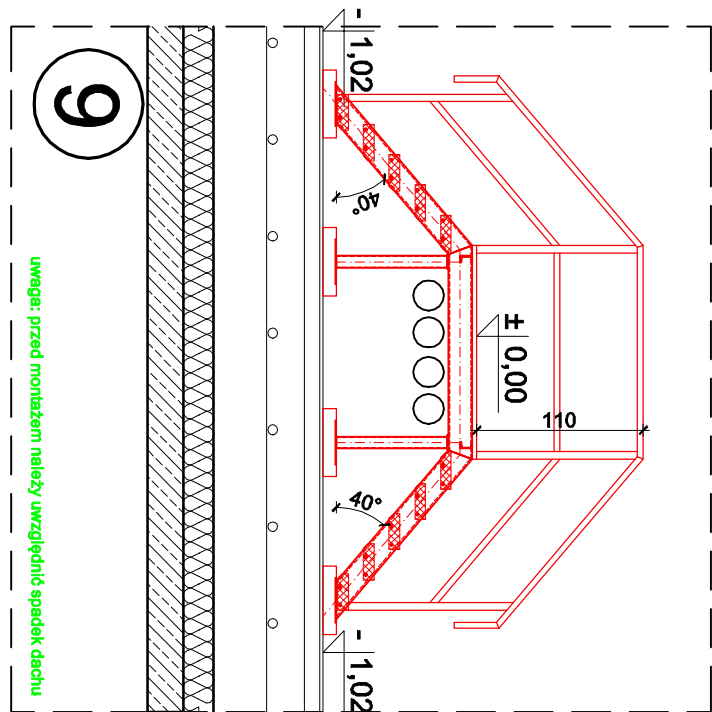
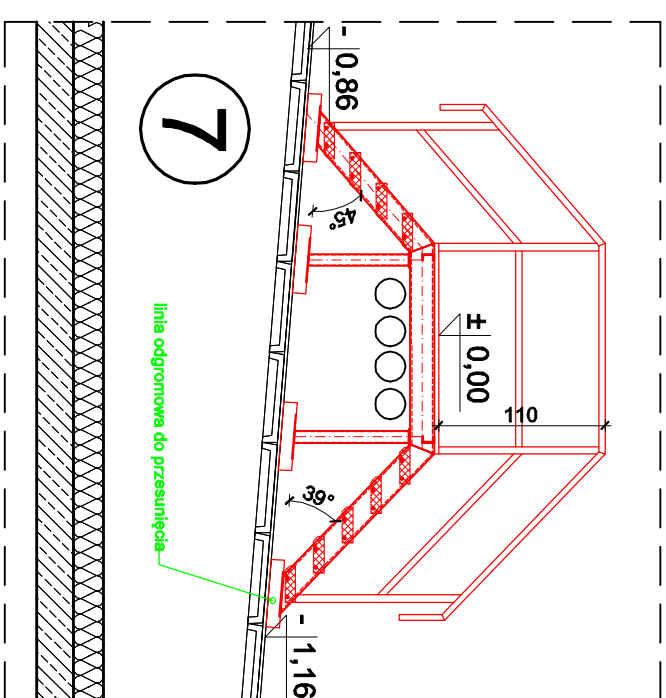
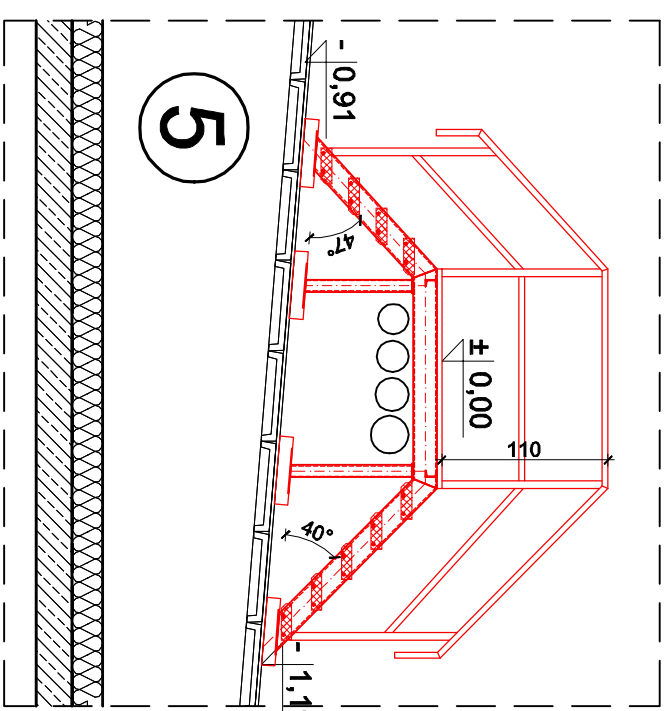
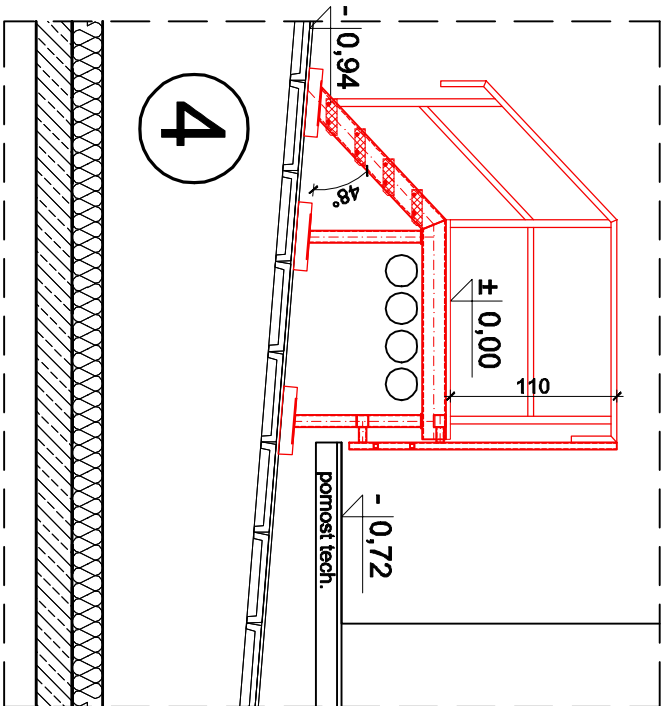
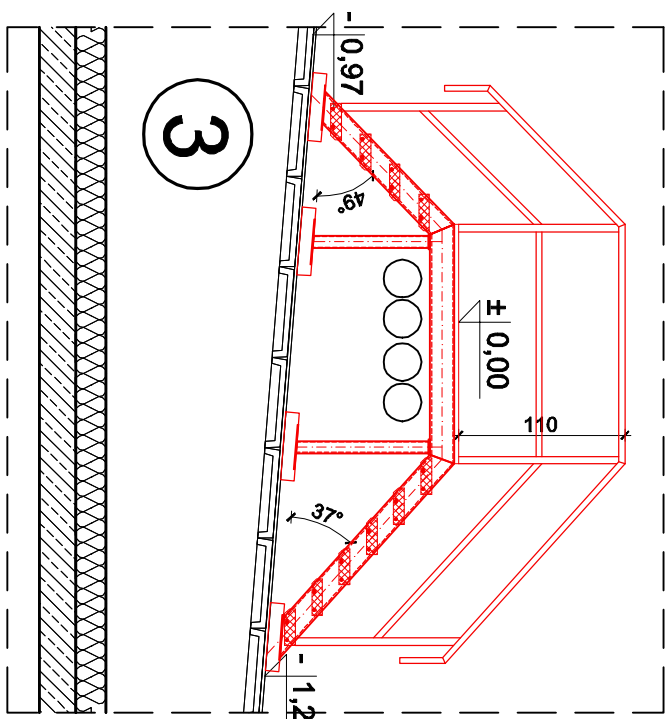
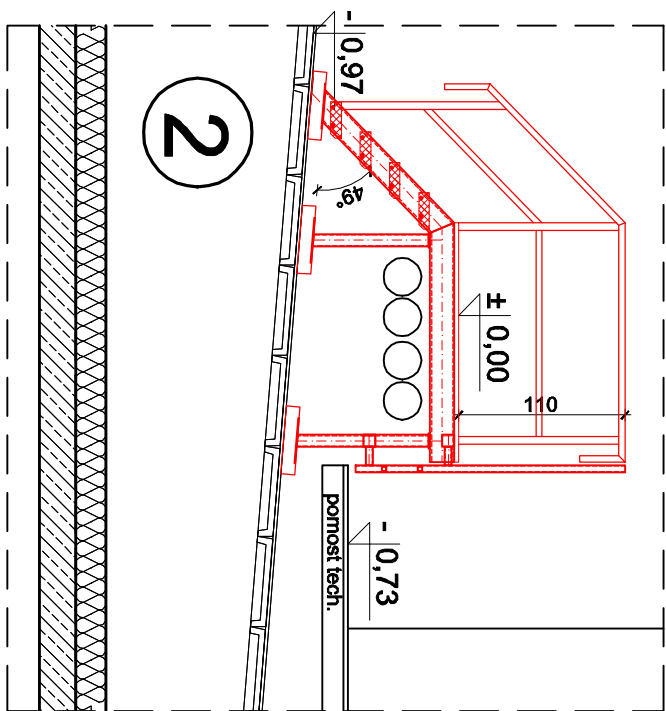
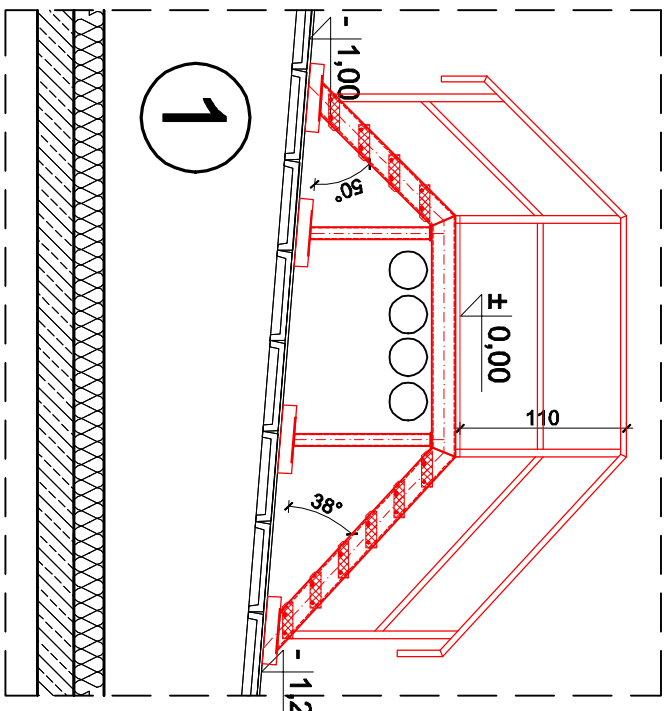
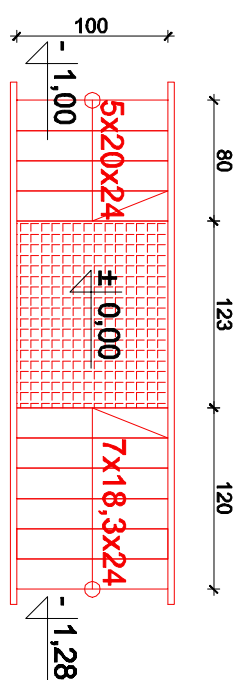
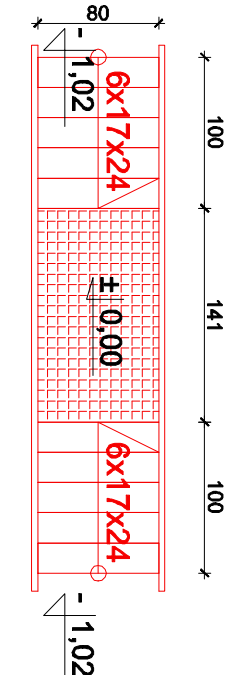
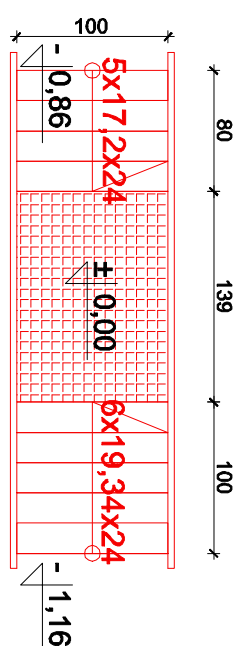
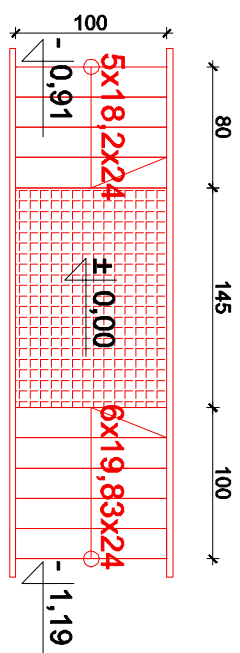
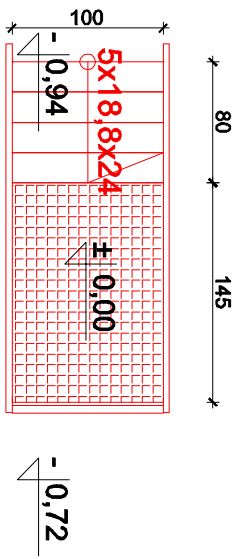
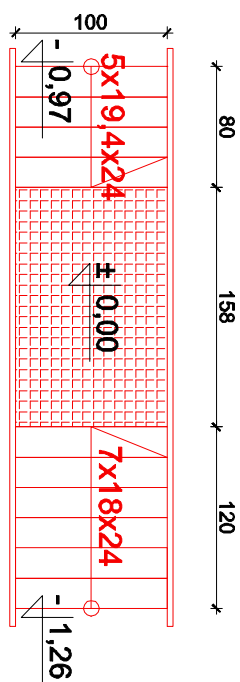
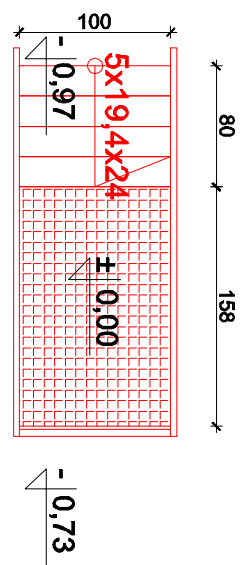
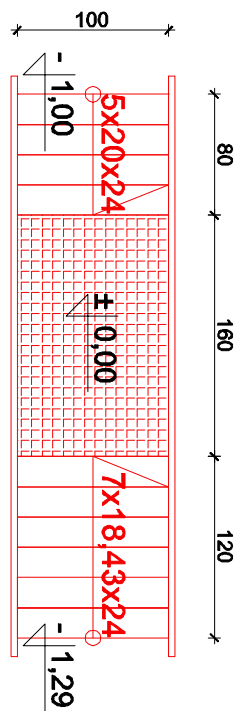
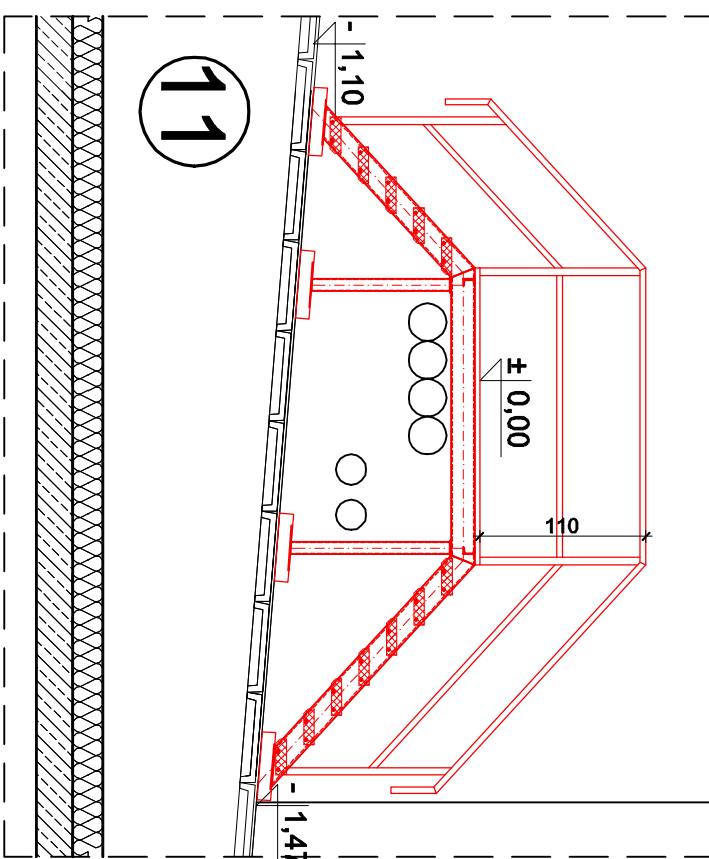
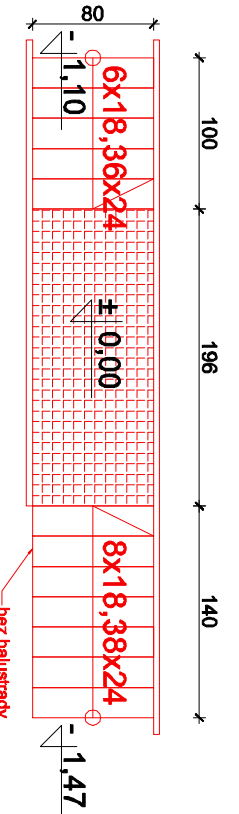
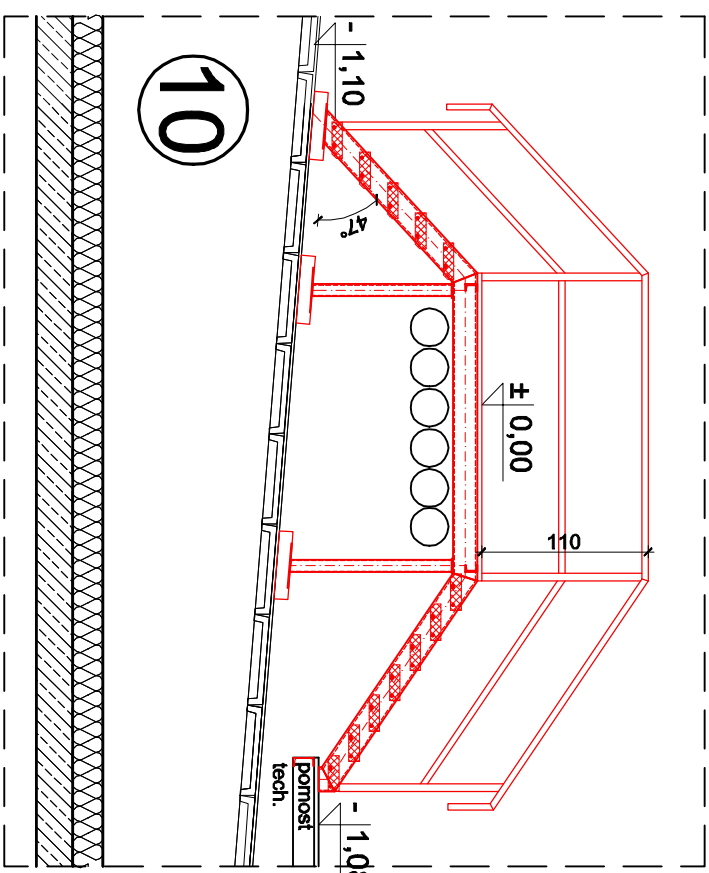
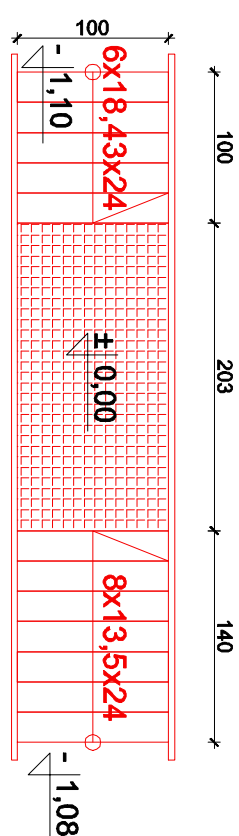
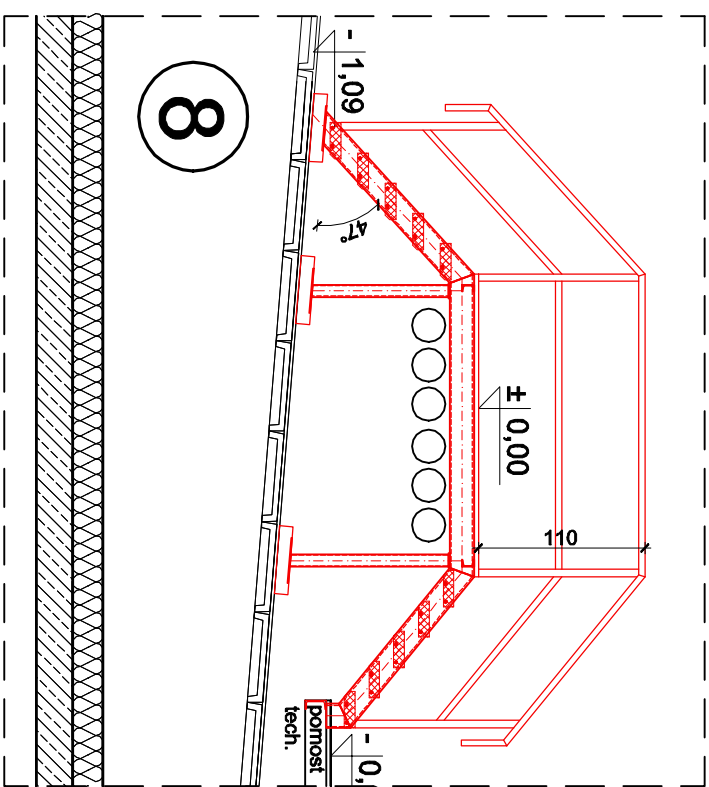
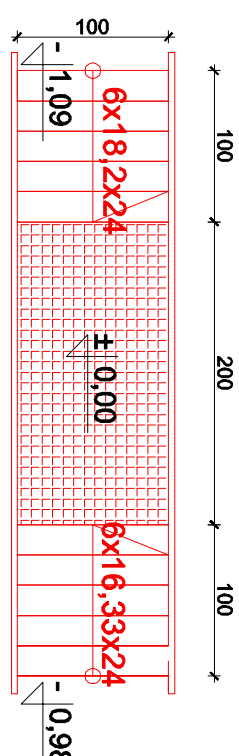
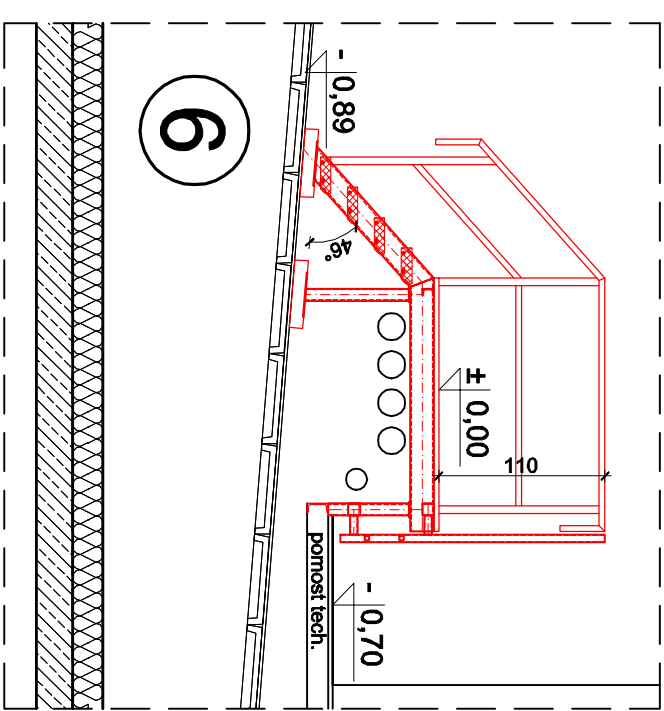
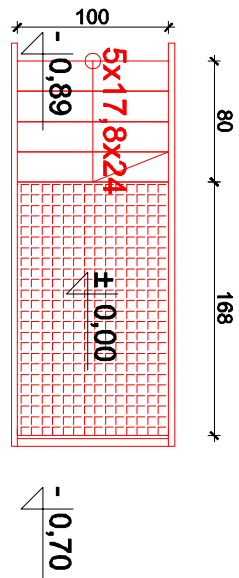
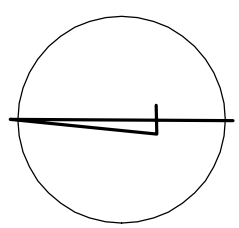



**RZUT DACHU - LOKALIZACJA POMOSTÓW
TECHNOLOGICZNYCH - BEZ SKALI**



RZUT DACHU - pomosty technologiczne
SKALA 1:100

		PREZESIEDOWNSTWO PROJEKTOWANE REALIZACYJNE ul. Piłsudskiego 102, 85-075 Bydgoszcz	
Inwestor: KILJANSKO POMORSKIE CENTRUM FIZJOLOGII I WYDOCHANIA ul. Seminaryjna 1	Branża: ARCHITEKTURA I KONSTRUKCJA	Data: 17.08.2018	
Temat: KILJANSKO POMORSKIE CENTRUM FIZJOLOGII I WYDOCHANIA, ul. Seminaryjna 1	Forma: PW	Nr zezwolenia: 1:100	Skala: 1:100
Rybnik: RZUT DACHU - pomieszczenia	Nr. rys. K1	Projektowane mgr inż. Jolanta Maciejewska ul. w. Wierzyńskiego 19/010202 85-075 Bydgoszcz ul. w. Górnego 27/01020277	Opracowane inż. arch. Radosław Wermus